

ASSEMBLED

Aluminum Picket Fence

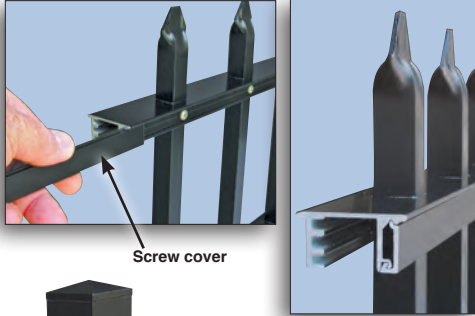
SERIES

7000

New

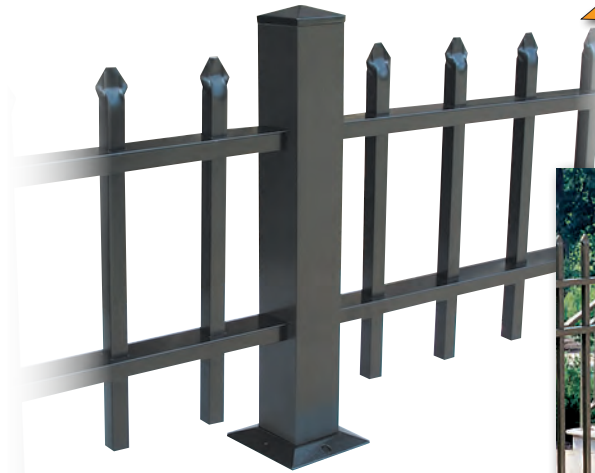
Product Presentation

Superior's innovative new Series 7000 Aluminum Assembled Picket Fence was specifically developed to conceal all exposed picket screw heads in the top and bottom rail assemblies and eliminate post brackets.



Screw cover

Openings are machined in the post to accept the assembled picket fence rails. With the rails positioned into the matching machined post opening, the result is a clean rigid design. Other major advantages to this design include quick turn around time and overall savings to the customer.



Superior Series 7000 Assembled Picket fence is available in 6 feet lengths and custom lengths in 2-line or 3-line styles. The 2-line style is available in heights up to 60". The 3-line style is available up to 72" high. See other design styles and options on our website.

If the fence is sloped (for uneven terrain) or angled horizontally, specify the angle so the proper openings can be machined in the post for top and bottom rail insertions. Posts are 2-1/2" square and pickets 3/4" square. Picket spacing is on 4-1/2" centers with formed spear, cast spear or flat top design. Ornaments are available to mount on top of post and add to the pickets for a custom decorative appearance.



Custom Aluminum Gates

Where a touch of elegance, function, use, and security is a must, specify Superior custom gates to any size and design configuration. The durable all-welded gate construction, plus electrostatic painting or anodizing, means years of trouble-free service. The gates can be equipped with a standard or custom security lock.



Maintenance-free fence for perimeter fencing, pool railings, and dividers on residential, commercial, institutional, multi-housing, and municipal installations.

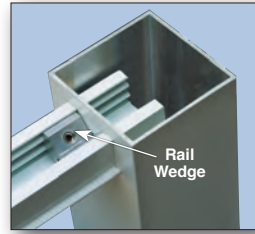
Easy Assembly and Installation

SERIES
7000
New

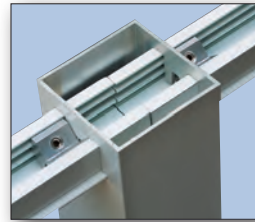
All post are machined with openings to receive the top and bottom rails. The end post are machined on one side. The section post are machined on opposite sides and the corner post are machined with openings at 90°.



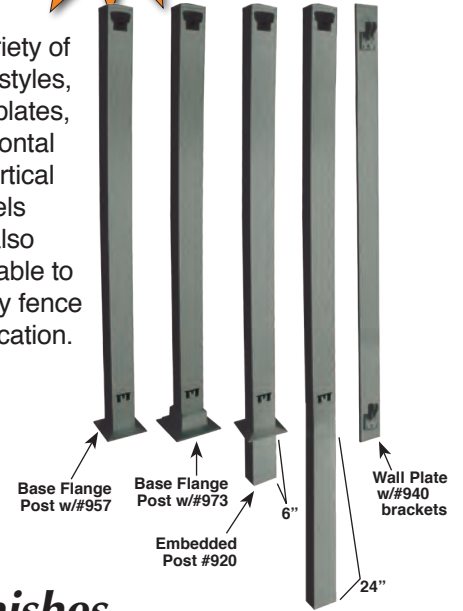
If a fence section or sections need to be shortened, simply saw an equal amount from each rail end with the use of a miter or circular saw. Reinstall and tighten the rail wedge using a 1/8" Allen Wrench on both the top and bottom rails so that 1-1/4" protrudes through the post openings.



View of the underside of the bottom rail to show the location of rail wedge above and in photos below.

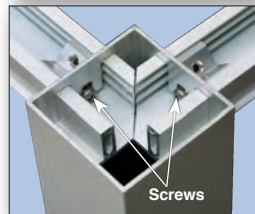
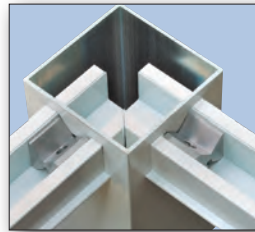


A variety of post styles, wall plates, horizontal or vertical swivels are also available to fit any fence application.



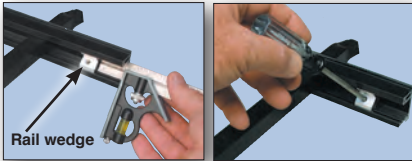
As Assembled Picket Fence is inserted in post machined openings, rail wedges located in top and bottom rails will assure proper rail insertion of 1-1/4" beyond the post machined opening inside the post.

For securing the adjacent fence to a corner post a screw is provided at each top rail wedge, (shown in bottom right photo) to prevent the corner post from moving outward.



Finishes

Smart decorative finishes add an elegant touch of class to the Series 7000 Assembled Picket Fence and custom designed gates. Whether baked-on enamel or anodized, these finishes are guaranteed to endure for years of continued service and maintenance-free beauty.



Rail wedge

Screws

You'll save time and money with the ease of installation of this fence.